

The statements herein have not been evaluated by the Food and Drug Administration. This product is not intended to diagnose, treat, cure, or prevent any disease. The Statements are informational only & in no way constitute medical advice. Always consult your doctor about your personal health matters.

EVERLAST
INNERgy

With
4000mg
Ningxia
Wolfberry

INNER

100% Natural
Oral Herbal Supplement

CHI Nature's Secret for
...Youth ...Vitality
...Longevity

**ENHANCE
OVERALL
WELL-BEING**

Si Bin/Tourmaline
Ceramic-Bead
INNERgized

For more information, please
contact your Independent Consultant:



EVERLAST
INNERgy

www.EverLastINNERgy.com

EverLast INNERgy
1192 E Draper Parkway, #414
Draper, UT 84020 USA

www.MakeHealthYourBusiness.com

INNER-Chi...is one of the most exciting health & fitness discoveries of our time because Ningxia Wolfberry is #1 in antioxidant & anti-aging nutrients. The amount of antioxidants in the body is directly proportional to long life.

Containing an impressive ORAC value of 25,300 among the "super-berries" our 4,000 mg of Ningxia Wolfberry in every vial is the highest concentration per ml currently available.



NINGXIA WOLFBERRIES

We use only the finest whole fruit Ningxia Wolfberries grown in altitudes above 9,000 feet.

These particular berries have been known to help support the kidneys, liver, pancreas & to strengthen the eyes, enhance muscle, bone & the Life Force (Chi)



Additionally, clinical tests conducted in China over a six month period, showed the following results:

- ⇒ **Reduced Cholesterol by 50%**
- ⇒ **Reduced Triglycerides by 71%**
- ⇒ **Raised HDL (good cholesterol) by 50%**
- ⇒ **Increased Glutathione in the liver by 50%**
- ⇒ **Lowered blood pressure**

INNER-Chi...provides dynamic energy & stamina, matchless age-defying anti-oxidant activity, sustained immune defense & DNA protection.

INNER-Chi also Improves Vision, Reduces Inflammation.



Each Vial:
10ml (0.34 FL. OZ.)

Total Packaging
30 Vials: 300ml (10.2 FL. OZ.)

IN ADDITION

Each INNER-Chi negative-ion & far infrared INNERgized vial contains our exclusive Si Bin/Tourmaline Power Bead.

NO OTHER Goji supplement has this unique and powerful Negative ION and Far Infrared component.

The Si Bin / Tourmaline Power Bead infuses INNER-Chi with 1,200/cc of negative ION energy.



Reported Benefits:

- ⇒ Reduce Cholesterol
- ⇒ Reduce Triglycerides
- ⇒ Raise HDL
- ⇒ Increased Glutathione
- ⇒ Lower Blood Pressure
- ⇒ Increase Stamina
- ⇒ Repair DNA
- ⇒ Improve Vision
- ⇒ Reduce Inflammation
- ⇒ Supports Liver, Kidneys and Pancreas

Ingredients:

Pure Chinese Ningxia Wolfberry Extract (Lycium barbarum) 4,000mg
 Pure Wild Honey2,000mg

Nothing more!!

NO added Sugar, **NO** Gluten, **NO** Yeast, **NO** Salt, **NO** Dairy products and **NO** Preservatives

Recommended Use

Drink 1-2 vials a day, before breakfast & after dinner.

Storage: in a cool dry place avoiding direct sunlight

Shelf Life: 2 Years.

The statements herein have not been evaluated by the Food and Drug Administration. This product is not intended to diagnose, treat, cure, or prevent any disease. The Statements are informational only & in no way constitute medical advice. Always consult your doctor about your personal health matters.

EVERLAST
INNERgy

With
Ginkgo
Biloba Leaf
& Panax
Ginseng

INNER 100% Natural
Oral Herbal Supplement

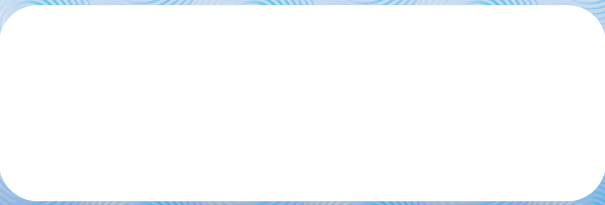
CLARITY

**INCREASE
BRAIN
FUNCTION**

*Si Bin/Tourmaline
Ceramic-Bead
INNERgized*



For more information, please
contact your Independent Consultant:



www.EverLastINNERgy.com

EverLast INNERgy
1192 E Draper Parkway, #414
Draper, UT 84020 USA
www.MakeHealthYourBusiness.com





GINKGO BILOBA

The Ginkgo Biloba plant leaf is considered an ancient Chinese treasure even today. The Ginkgo Biloba leaf extract, long considered an herbal delicacy, is made exclusively from the prized Chinese

Ginkgo Biloba plant. This precious extract is the first and only quality 100% ginkgo biloba leaf extract produced in China.

Ginkgo has many alleged nootropic (memory enhancing, and cognitive enhancing) properties, and is mainly used as memory and concentration enhancer, and anti-vertigo agent. Some studies suggest a link between ginkgo and the easing of the symptoms of tinnitus.

PANAX GINSENG

Panax ginseng is one of the most commonly used and highly researched species of ginseng. This species, which is native to China, has been an important herbal remedy in traditional Chinese medicine for thousands of years, where it has been used primarily as a treatment for weakness and fatigue.



INNER-Clarity contains two powerful ingredients; Ginkgo Biloba and Panax Ginseng.

Each Vial:
10ml (0.34 FL. OZ.)

Total Packaging
30 Vials: 300ml (10.2 FL. OZ.)

IN ADDITION

Each INNER-Clarity negative-ion & far infrared INNERgized vial contains our exclusive Si Bin/Tourmaline Power Bead.

NO OTHER ginkgo biloba and panax ginseng supplement has this unique and powerful Negative ION and Far Infrared component.

The Si Bin /Tourmaline Power Bead infuses INNER-Clarity with 1,200/cc of negative ION energy.



Reported Benefits:

- ⇨ Combat Fatigue
- ⇨ Promote Energy
- ⇨ Improve Memory
- ⇨ Improve Vision
- ⇨ Revitalize the Body after Illness
- ⇨ Stimulate the Body' Senses
- ⇨ Improve Circulation
- ⇨ Enhance Focus & Concentration
- ⇨ Relieve Headaches
- ⇨ Alleviate Depression
- ⇨ Reduce Altitude Sickness

Ingredients:

Ginkgo Biloba Leaf Extract..... 600mg
Panax Ginseng600mg
Water and Pure Wild Honey **Nothing more!!**

NO added Sugar, **NO** Gluten, **NO** Yeast, **NO** Salt, **NO** Dairy products and **NO** Preservatives

Recommended Use

Drink 1-2 vials a day, before breakfast & after dinner.
Storage: in a cool dry place avoiding direct sunlight
Shelf Life: 2 Years.

The statements herein have not been evaluated by the Food and Drug Administration. This product is not intended to diagnose, treat, cure, or prevent any disease. The Statements are informational only & in no way constitute medical advice. Always consult your doctor about your personal health matters.

EVERLAST
INNERgy

With
**RED
SAGE
ROOT**

INNER

100% Natural
Oral Herbal Supplement

PULSE

**STIMULATE
CIRCULATION**



**Si Bin/Tourmaline
Ceramic-Bead
INNERgized**

For more information, please
contact your Independent Consultant:



EVERLAST
INNERgy

www.EverLastINNERgy.com

EverLast INNERgy
1192 E Draper Parkway, #414
Draper, UT 84020 USA

www.MakeHealthYourBusiness.com





RED SAGE ROOT

Chinese herbal doctors have determined that Red Sage Root promotes blood circulation, removes blood stasis and aides in the removal or arterial

plaque. It is also used in the treatment of chest and abdominal pain caused by fever, inflammation, swelling, and irregular menstruation. Because of its tropism to the Heart, and tranquilizing affect, they have also used it to relieve restlessness, and emotional stress due to panic.

Acts on the heart and liver promoting blood circulation while relieving blood stasis, lowering fever, reducing inflammation and swelling, tranquilizes the mind.

RHIZOMA LIGUSTICUM CHUANXIONG

Acts on the liver, gallbladder and pericardium promoting blood circulation to the heart, brain, kidneys and liver while reducing inflammation to relieve pain.

PUERARIA ROOT

Chinese believe that it helps to eliminate pathogens from muscles and improve healthy activity in the spleen and stomach by dispelling pathogens and reducing fever. It has been used for relieving muscular tension in the neck and back, improve deficiency of the spleen, promote elimination of toxins, and promote the healthy hydration of the body.

IN ADDITION

Each INNER-Pulse negative-ion & far infrared INNERgized vial contains our exclusive Si Bin/Tourmaline Power Bead.

ONLY EverLast INNERgy supplements have this unique and powerful Negative ION and Far Infrared component.

The Si Bin / Tourmaline Power Bead infuses INNER-Pulse with 1,200/cc of negative ION energy.



Reported Benefits:

- ⇒ Improves circulation
- ⇒ Extremely beneficial to both the heart & brain
- ⇒ Assists in the removal of arterial plaque
- ⇒ Reduces inflammation
- ⇒ Improves hydration
- ⇒ Nourishes the liver, kidneys and pancreas
- ⇒ Detoxifies the blood

Ingredients:

Radix Salviae Miltiorrhizae (Red Sage Root), Rhizoma Ligusticum Chuanxiong, Radix Pueraria.
Water and Pure Wild Honey **Nothing more!!**

CONTAINS:

NO added Sugar, **NO** Gluten, **NO** Yeast, **NO** Salt, **NO** Dairy products and **NO** Preservatives

Recommended Use

Drink 1-3 vials a day, before breakfast & after dinner.

Storage: in a cool dry place avoiding direct sunlight

Shelf Life: 2 Years.

INNER-Pulse is formulated with 3 very Powerful and Beneficial Chinese Herbs.



Each Vial:
10ml (0.34 FL. OZ.)
Total Packaging
30 Vials: 300ml (10.2 FL. OZ.)

The statements herein have not been evaluated by the Food and Drug Administration. This product is not intended to diagnose, treat, cure, or prevent any disease. The Statements are informational only & in no way constitute medical advice. Always consult your doctor about your personal health matters.

EVERLAST
INNERgy

With
Indian
Mulberry
Root

INNER

100% Natural
Oral Herbal Supplement

VITALITY

IMPROVE STAMINA



**Si Bin/Tourmaline
Ceramic-Bead
INNERgized**

For more information, please
contact your Independent Consultant:



EVERLAST
INNERgy

www.EverLastINNERgy.com

EverLast INNERgy
1192 E Draper Parkway, #414
Draper, UT 84020 USA
www.MakeHealthYourBusiness.com

INNER-Vitality is a powerful Chinese herbal formula specifically formulated to nourish the blood, liver, kidneys and improve blood micro-circulation.

They discovered that in the process of performing the above mentioned functions in the body, that mood and disposition was greatly enhanced.

INNER-Vitality...stimulates the brain while greatly improving blood circulation, thereby enhancing the overall intimate experience.

An all-natural herbal liquid supplement providing optimum confidence & enjoyment for both men & women containing no alcohol with no negative side effects.

INNER-Vitality...negative-ion & far infrared INNER-gized vial contains our exclusive Si Bin/Tourmaline-infused-ceramic-beads. In addition, the all natural ingredients nourish the blood, liver & kidneys...relieving fatigue, providing energy, boosting the spirit & markedly increasing vitality & stamina

Caution: People with heart problems or high blood pressure should consult their health care professional before taking this product.

INNER-Vitality is formulated with 8 very Powerful and Beneficial Chinese Herbs.



IN ADDITION

Each INNER-Vitality negative-ion & far infrared INNERgized vial contains our exclusive Si Bin/Tourmaline Power Bead.

ONLY EverLast INNERgy supplements have this unique and powerful Negative ION and Far Infrared component.

The Si Bin / Tourmaline Power Bead infuses INNER-Vitality with 1,200/cc of negative ION energy.



Reported Benefits:

- ⇒ Nourish Blood, Liver & Kidneys
- ⇒ Increase Blood Flow
- ⇒ Stimulate the Brain
- ⇒ Increase Stamina
- ⇒ Increase Confidence
- ⇒ Enhance Intimate Experience

Ingredients:

Deer Antler, Curculigo Rhizome, Epimedium, Indian Mulberry Root, Cistanche, Goji Berry, Siberian Ginseng, Tuber Fleceflower Root.

Water and Pure Wild Honey **Nothing more!!**

NO added Sugar, **NO** Gluten, **NO** Yeast, **NO** Salt, **NO** Dairy products and **NO** Preservatives

Recommended Use

Drink 1-3 vials a day as needed.

Storage: in a cool dry place avoiding direct sunlight

Shelf Life: 2 Years.